



# One-year outcomes in a multicentre cohort study of incident rare diffuse parenchymal lung disease in children (ChILD)

Steve Cunningham <sup>1,2</sup>, Catriona Graham,<sup>3</sup> Morag MacLean,<sup>4</sup> Paul Aurora,<sup>5</sup> Michael Ashworth,<sup>6</sup> Angelo Barbato,<sup>7</sup> Alistair Calder,<sup>8</sup> Julia Carlens,<sup>9</sup> Annick Clement,<sup>10</sup> Meike Hengst,<sup>11</sup> Birgit Kammer,<sup>12</sup> Nural Kiper,<sup>13</sup> Katarzyna Krenke,<sup>14</sup> Kai Kronfeld,<sup>15</sup> Joanna Lange,<sup>14</sup> Julia Ley-Zaporozhan,<sup>16</sup> Andrew Nicholson,<sup>17</sup> Simone Reu,<sup>18</sup> Traudl Wesselak,<sup>11</sup> Martin Wetzke,<sup>19</sup> Andrew Bush <sup>20</sup>, Nicolaus Schwerk,<sup>21</sup> Matthias Griese,<sup>22</sup> on behalf of the ChILDEU study group

► Additional material is published online only. To view please visit the journal online (<http://dx.doi.org/10.1136/thoraxjnl-2019-213217>).

For numbered affiliations see end of article.

## Correspondence to

Professor Steve Cunningham, Centre for Inflammation Research, University of Edinburgh, Edinburgh, UK; [steve.cunningham@nhs.net](mailto:steve.cunningham@nhs.net)

Received 11 February 2019  
Revised 22 October 2019  
Accepted 30 October 2019

## ABSTRACT

We performed a prospective, observational, cohort study of children newly diagnosed with children's interstitial lung disease (ChILD), with structured follow-up at 4, 8, 12 weeks and 6 and 12 months. 127 children, median age 0.9 (IQR 0.3–7.9) years had dyspnoea (68%, 69/102), tachypnoea (75%, 77/103) and low oxygen saturation (SpO<sub>2</sub>) median 92% (IQR 88–96). Death (n=20, 16%) was the most common in those <6 months of age with SpO<sub>2</sub><94% and developmental/surfactant disorders. We report for the first time that ChILD survivors improved multiple clinical parameters within 8–12 weeks of diagnosis. These data can inform family discussions and support clinical trial measurements.

## INTRODUCTION

Interstitial lung disease in children (ChILD) encompasses more than 200 entities,<sup>1</sup> many so rare that there is no reported prospective longitudinal disease phenotyping.<sup>2</sup> Recent improvements in adult interstitial lung disease phenotyping has led to better disease management. We aimed to use the first international collaboration for ChILD to systematically study new diagnoses for 12 months, to better understand disease progression and support the development of clinical outcomes.

## METHODS

This was an observational cohort study of children (<18 years) presenting to participating hospitals with a new clinical presentation of ChILD, submitted to the ChILD-EU Registry (<http://www.childeu.net>) between December 2013 and March 2016.<sup>3</sup> Cases were registered following brief screening questions and were subject to multidisciplinary peer review to standardise diagnostic precision.<sup>3</sup> Common causes of diffuse lung disease (ie, cystic fibrosis, respiratory distress syndrome) were excluded. There were 133 incident cases during this period. Six were excluded from analysis, leaving 127 reported here (1 time from diagnosis too great, 2 airway disease, 1 pleural disease, 2 insufficient data). The enrolment date (baseline data) was the study start date. Study variables were collected at baseline, 4, 8, 12 weeks and 6 and 12 months (end of the study) and included

patient demographics, initial diagnoses, family and neonatal history, current history and symptoms, physical examination findings, Fan score,<sup>4</sup> laboratory results and treatments trialled and current (see study protocol (<https://www.ed.ac.uk/usher/edinburgh-clinical-trials/our-studies/ukcrc-studies/child-eu>) and ChILDEU website (<http://www.childeu.net>) for study variables and standardisation standard operating procedures).<sup>5,6</sup> Biobank materials included (where available) chest radiology (CT), genetic mutation analysis and lung biopsy. Investigation and treatment recommendations were standardised.<sup>7</sup> Ethical and legal approvals and were present in all recruiting centres. Fully informed parental consent was obtained prior to study inclusion. Comparison of continuous variable was by Mann-Whitney test (where only two categories that is, dead/alive) or Kruskal-Wallis test (>two categories that is, baseline oxygen levels). Missing SpO<sub>2</sub> values were imputed (see online supplementary methods). Height, weight and body mass index were converted to Centre for Disease Control z-scores and percentiles.<sup>8</sup> FEV<sub>1</sub> and FVC were converted into Global Lung Initiative z-scores and percentiles.<sup>9</sup> The trial is registered on clinical trials (<https://clinicaltrials.gov/ct2/show/NCT02852928>).

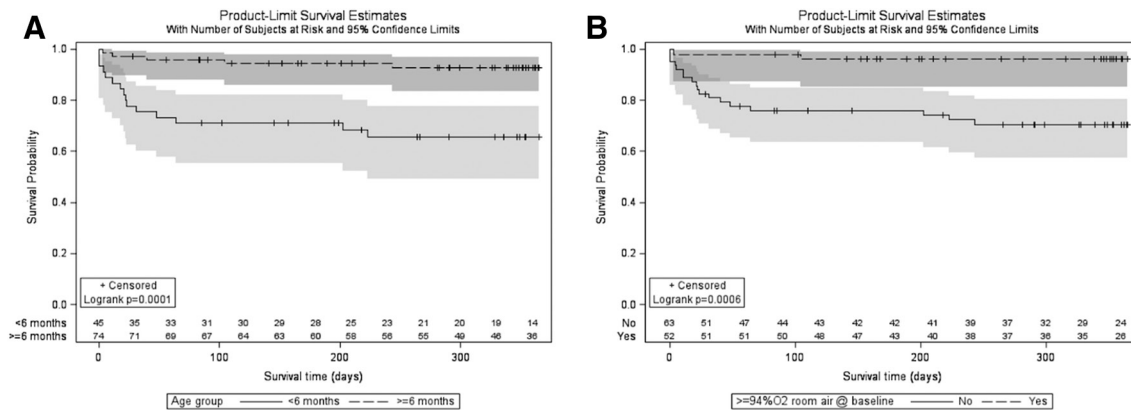
## RESULTS

Participants were from nine European countries, predominantly Germany, UK and Poland (online supplementary table 1). The proportion of participants providing follow-up data (or dead) at each time point ranged from 76%–83% (online supplementary table 2). Median age at baseline was 0.9 (IQR 0.3–7.9) years (online supplementary table 1). Peer review diagnosis, investigations and treatments are provided in supplementary information (online supplementary tables 3–5). At baseline, dyspnoea (68%, 69/102) and tachypnoea (75%, 77/103) were frequent, with failure to thrive in 49% (61/125) common (online supplementary table 6). Baseline SpO<sub>2</sub> in room air ≤94% was recorded in 53% (65/122) at a median 92% (IQR 88–96). Lower baseline SpO<sub>2</sub> was most common in younger infants related to growth, developmental or surfactant related disorders (online supplementary table 3, figure 1).



© Author(s) (or their employer(s)) 2019. No commercial re-use. See rights and permissions. Published by BMJ.

**To cite:** Cunningham S, Graham C, MacLean M, et al. *Thorax* Epub ahead of print: [please include Day Month Year]. doi:10.1136/thoraxjnl-2019-213217



**Figure 1** Survival by Kaplan Meier for (A) age < or ≥6 months, (B) baseline room air SpO<sub>2</sub> < or ≥94%.

There were 20 deaths (16%) over 12 months. Age at death, time from enrolment to death and diagnostic group are provided in online supplementary table 3. Most deaths occurred in diffuse developmental disorders (n=6), alveolar surfactant disorders (n=6) and lung growth abnormalities (n=3). Age at baseline was significantly associated with survival, with deaths in 33% (15/45) of those <6 months of age compared with 7% (5/74) in those ≥6 months of age (log-rank statistic, p=0.0001) (figure 1A). SpO<sub>2</sub> at baseline ≥94% was associated with better survival (4% died: 2/52), compared with 29% (18/63) of those with SpO<sub>2</sub><94%, (p=0.0006) (figure 1B).

Over 12 months, ventilatory support was used in 49 (39%) children, decreasing steeply over time with improvement or death (table 1). Of the 31 children ventilated at baseline, 15 died (11 invasive, 4 non-invasive ventilation). Supplemental oxygen was provided to 72% (92/127) at any point from baseline to 12 months. The percentage of children in follow-up recorded as receiving oxygen supplementation declined most markedly from baseline (63%, 74/117) to 12 week observations (31%, 23/74). For 33 children (26%), SpO<sub>2</sub> in air was never ≥94%, mostly in those who subsequently died or were aged <6 months of age at baseline (table 1). Most improvement in SpO<sub>2</sub> in air was observed in the first 8 weeks following enrolment (online supplementary figures 1A,B and 3).

There was a progressive reduction over time in Fan scores

(figure 2 and online supplementary figure 1C), predominantly in the first 12 weeks, but continuing up to 12 months (online supplementary figure 4), with deaths more frequent at higher baseline scores (5 (36%, 8/22) and 4 (23%, 9/40)).

Weight for age at baseline was low and remained so at 12 months (online supplementary table 7). Most improvements in weight and height occurred in the first 4 weeks, with slower gains thereafter. Lower weight and height z-score at baseline was significantly associated with lower baseline SpO<sub>2</sub> and death (online supplementary figure 5).

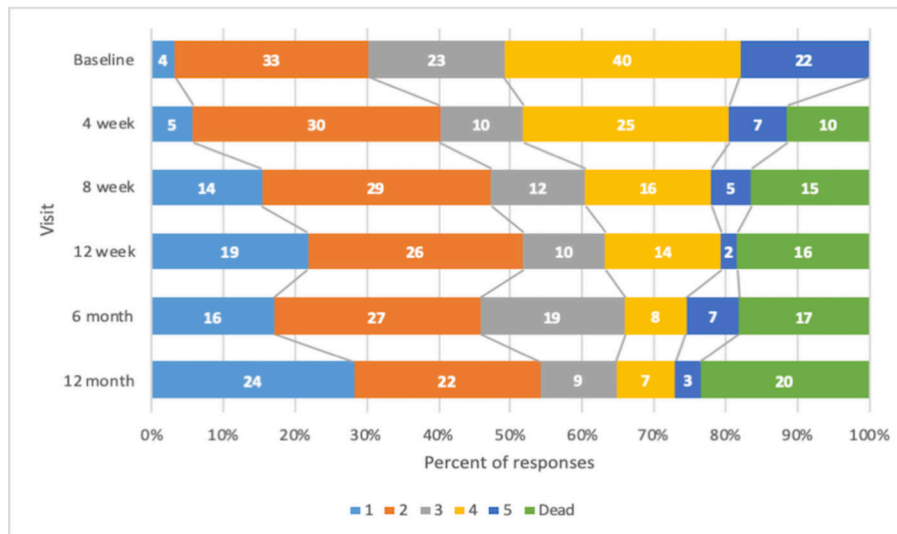
Median respiratory rate tended to be higher than age related reference values<sup>10</sup> at baseline but similar to age-adjusted reference values by 12 months. Median heart rate was similar to age related reference values across observations<sup>10</sup> (online supplementary figure 6A–D).

Improvement in FEV<sub>1</sub> % predicted and z score continued up to 12 weeks, with little subsequent change (table 1). FVC had a more progressive change over the 12-month observation period, again most marked in the first 12 weeks (FVC % predicted median 48% to 65% and to 80% by 12 months). At baseline 19/25 (76%) spirometry demonstrated a restrictive (FEV<sub>1</sub>/FVC≥0.8) and 6/25 (24%) an obstructive pattern (ratio<0.8).

Systemic corticosteroids were provided to 58% (73/125), hydroxychloroquine 28% (35/126) and azithromycin 36% (45/126) of cases over the observation period (online

**Table 1** Deaths, clinical support and physiology by study visit

	Deaths	Non-invasive ventilation		Invasive ventilation		Supplemental oxygen		SpO <sub>2</sub> ≥94% in air		Spirometry	FVC (% predicted)	FEV <sub>1</sub> (% predicted)
		N	%	N	%	N	%	N	%	N	Median (IQR)	Median (IQR)
Prior to baseline	0	41/126	33	43/126	34	93/125	74	–	–	–	–	–
At baseline	0	18/114	16	16/116	14	74/117	63	57/122	47	25/36	48 (34–73)	50 (35–68)
4 weeks	10	6/80	8	6/80	8	37/80	46	47/83	57	17/36	59 (44–79)	66 (49–76)
8 weeks	15	2/76	3	3/75	4	29/75	39	52/78	67	17/36	65 (46–83)	67 (46–81)
12 weeks	16	3/74	4	2/72	3	23/74	31	54/74	73	18/36	77 (57–86)	74 (56–85)
6 months	20	4/84	5	2/83	3	27/83	33	62/82	76	21/36	75 (61–84)	70 (59–78)
12 months	20	2/72	3	1/71	1	16/69	23	54/70	77	18/36	80 (69–96)	74 (65–89)



**Figure 2** Change of Fan score over observation period (numbers in bars represent number in each group).

supplementary information).

## DISCUSSION

We report that many clinical parameters appeared to improve within 8–12 weeks of diagnosis and starting treatment in children with ChILD. To our knowledge, this is the first prospective, longitudinal, cohort assessment of ChILD. At 12 weeks, when compared with baseline, provision of oxygen supplementation was observed in 31% fewer children, and lung function was 29% greater for FVC and 24% for FEV<sub>1</sub>. Mean Fan scores were 29% lower at 12 weeks. Differences in respiratory rate (and heart rate) across timepoints when related to normative data were not observed to have notable differences. We did not, however, provide a formal longitudinal analysis and this together with missing data may have impacted the results. We also acknowledge potential bias may have occurred from the effect of funding limitations on recruitment in some EU countries and translation of study materials. In summary, we have identified key parameters responsive to change in ChILD which could be used in trials of treatment and inform prognostic discussions with families. Furthermore, we suggest that patients with ChILD should be seen more frequently in the first 3 months following diagnosis, so treatment can be adjusted with any clinical improvement.

## Author affiliations

- <sup>1</sup>Centre for Inflammation Research, University of Edinburgh, Edinburgh, UK  
<sup>2</sup>Department of Respiratory and Sleep Medicine, Royal Hospital for Sick Children, Edinburgh, UK  
<sup>3</sup>Wellcome Trust Clinical Research Facility, Western General Hospital, Edinburgh, UK  
<sup>4</sup>Edinburgh Clinical Trials Unit, University of Edinburgh, Edinburgh, UK  
<sup>5</sup>Department of Respiratory Paediatrics, Great Ormond Street Hospital, London, UK  
<sup>6</sup>Department of Paediatric Pathology, Great Ormond Street Hospital for Children NHS Trust, London, UK  
<sup>7</sup>Department of Women's and Children's Health, University of Padova, Padua, Italy  
<sup>8</sup>Department of Radiology, Great Ormond Street Hospital for Children NHS Foundation Trust, London, UK  
<sup>9</sup>Department of Pediatric Pneumology, Medizinische Hochschule Hannover, Hannover, Germany  
<sup>10</sup>Paediatric Pulmonary Department, Trousseau Hospital APHP, Sorbonne Universities and Pierre et Marie Curie University, Paris, France  
<sup>11</sup>Pediatric Pneumology, Hauner Children's University Hospital, Munich, Germany  
<sup>12</sup>University Children's Hospital at Dr. von Haunersches Kinderspital, LMU Munich, Munich, Germany  
<sup>13</sup>Pediatric Pulmonology, Hacettepe University, Ankara, Turkey  
<sup>14</sup>Department of Pediatric Pneumology and Allergy, Warszawski Uniwersytet Medyczny, Warszawa, Poland

- <sup>15</sup>IZKS Mainz, University Medical Center Mainz, Mainz, Germany  
<sup>16</sup>Institute for Clinical Radiology, University Hospital of Ludwig Maximilian University, Munich, Germany  
<sup>17</sup>Royal Brompton and Harefield NHS Foundation Trust and Imperial College, London, UK  
<sup>18</sup>Pathology, Ludwig-Maximilians-Universität München Medizinische Fakultät, München, Germany  
<sup>19</sup>Department of Pediatric Pulmonology, Allergology and Neonatology, Hannover Medical School, Hannover, Germany  
<sup>20</sup>Department of Respiratory Paediatrics, Royal Brompton Hospital, London, UK  
<sup>21</sup>Department of Pediatric Pneumology, Allergology and Neonatology, Hannover Medical School, Hannover, Germany  
<sup>22</sup>Lung Research Group, Children's Hospital of Ludwig Maximilians University, Munich, Germany

**Acknowledgements** This work is a collaboration of European Respiratory Society Clinical Research Collaboration for Children's Interstitial Lung Disease (CRC-2015-02), COST Action EnterCHILD (CA16125) and KidsLungRegister child-EU Register.

**Collaborators** Dr Jayesh Bhatt, Nottingham Children's Hospital, UK; Dr Frederik Buchvald, Copenhagen University Hospital, Denmark; Dr Nazan Cobanoglu, Ankara University, Turkey; Dr Fran Child, Royal Children's Hospital, Manchester, UK; Dr Nwokoro Chinedu, Royal London Hospital, UK; Dr Leonard Donato, Colmar, Civil, Strasbourg, France; Ralph Epaud, INSERM 955 - Equipe 5, Paris, France; Dr Ampara Escribano, Valencia, Neumologia Inf, Spain; Dr Achim Freihorst, Aalen, Ostalb Klinikum, Germany; Dr Atul Gupta, King's College Hospital, London, UK; Dr Emma Guy, Leeds General Infirmary, UK; Dr Tobias Hübner, Oldenburg, Zentr. Kind-Jugend, Germany; Dr Petra Kaiser-Labusch, Bremen, Klin. Bremen-Mitte, Germany; Dr Christiane Lex, Göttingen University, Germany; Dr Sarah Mayell, Royal Liverpool Children's Hospital, UK; Dr Samantha Moss, Royal Victoria Infirmary, Newcastle, UK; Dr Nagehan Emiralioglu, Ankara, Hacettepe University, Turkey; Dr Lutz Nährlich, Giessen, Germany; Dr Nadia Nathan, Hôpital Trousseau, Paris, France; Dr Ruth O'Reilly, Sheffield Children's Hospital, UK; Dr Nicolas Regamey, Luzern, Kinderspital, Switzerland; Dr Isabelle Rochat, Lausanne, Switzerland; Dr Martin Rosewich, Frankfurt/Main, JWG University, Germany; Dr Tugbu Sismanlar, Ankara, Gazi University, Turkey; Dr Deborah Snijders, Padua University, Italy; Dr Florian Stehling, Essen, University, Germany.

**Contributors** Chief investigator of ChILDEU project: MG. Principle investigator observational study: SC. Developed protocol: SC, CG, MM, ABa, ACle, NK, KKro, AB, NS and MG. Peer review team: PA, MA, ACa, JLZ, AN, SR, TW, AB, NS and MG. Data preparation: JC, MH, KK, KKro, JL and MW. Analysis: SC and CG. Analysis review: AB, NS and MG. Final draft: SC, CG, MM, PA, MA, ABa, ACa, ACle, MH, BK, KKat, NK, KKro, JL, JLZ, AN, SR, TW, MW, AB, NS and MG.

**Funding** The project was funded by the European Union's Seventh Framework Program under grant agreement n°305653—child-EU.

**Disclaimer** The funders had no role in the writing of the manuscript or the decision to submit it for publication.

**Competing interests** SC and VS report other from Boehringer Ingelheim, outside the submitted work; MG reports other from Vertex and Boehringer Ingelheim, outside the submitted work.

**Patient consent for publication** Not required.

**Provenance and peer review** Not commissioned; externally peer reviewed.

#### ORCID iDs

Steve Cunningham <http://orcid.org/0000-0001-7342-251X>

Andrew Bush <http://orcid.org/0000-0001-6756-9822>

#### REFERENCES

- Griese M. Chronic interstitial lung disease in children. *Eur Respir Rev* 2018;27. doi:10.1183/16000617.0100-2017. [Epub ahead of print: 31 Mar 2018].
- Hime NJ, Zurynski Y, Fitzgerald D, *et al*. Childhood interstitial lung disease: a systematic review. *Pediatr Pulmonol* 2015;50:1383–92.
- Griese M, Seidl E, Hengst M, *et al*. International management platform for children's interstitial lung disease (chILD-EU). *Thorax* 2018;73:231–9.
- Fan LL, Deterding RR, Langston C. Pediatric interstitial lung disease revisited. *Pediatr Pulmonol* 2004;38:369–78.
- ChildEU. European platform for childhood interstitial lung diseases, 2018. Available: [www.childeu.net](http://www.childeu.net) [Accessed 03 Apr 2018].
- ChILDEU. Orphans unite: chILD better together – European management platform for childhood interstitial lung diseases, 2016. Available: <https://www.ed.ac.uk/usher/edinburgh-clinical-trials/our-studies/ukcrc-studies/child-eu> [Accessed 20 Apr 2018].
- Bush A, Cunningham S, de Blic J, *et al*. European protocols for the diagnosis and initial treatment of interstitial lung disease in children. *Thorax* 2015;70:1078–84.
- Centre for Disease Control and Prevention (CDC). A SAS Program for the 2000 CDC Growth Charts (ages 0 to <20 years), 2016. Available: <https://www.cdc.gov/nccdphp/dnpao/growthcharts/resources/sas.htm> [Accessed 03 Apr 2018].
- European Respiratory Society. Global lung initiative spirometry tools, 2018. Available: <http://www.ers-education.org/guidelines/global-lung-function-initiative/spirometry-tools/sas-macro.aspx> [Accessed 03 Apr 2018].
- Fleming S, Thompson M, Stevens R, *et al*. Normal ranges of heart rate and respiratory rate in children from birth to 18 years of age: a systematic review of observational studies. *Lancet* 2011;377:1011–8.